



Chestnut Avenue, London, E7

BUTLER & STAG



Guide Price £475,000 - £500,000
An exciting opportunity to acquire this charming two-bedroom end-of-terrace Edwardian home situated on the sought-after Chestnut Avenue in Forest Gate. This property, requiring modernisation, presents an excellent prospect for buyers looking to put their own stamp on a period home with plenty of character.



Freehold

- End Of Terrace (Freehold) House
- Private Court Yard Garden
- Opportunity To Improve and Add Value
- Wanstead Park and Forrest Gate Station On Your Door Step
- Two Bedrooms
- Seperate Kitchen
- Chain Free
- Green Open Spaces A Moments Walk Away

The property boasts - a bright and airy reception room, good-sized kitchen offering potential for renovation, a private rear garden, two generously sized bedrooms and a bathroom.

Located in a desirable residential area, the property is within easy reach of Wanstead Park Station (Elizabeth Line), providing quick access to central London. Wanstead Flats, a local green space just a short walk away, offering a peaceful retreat from city life. The area also benefits from an array of local amenities, schools.

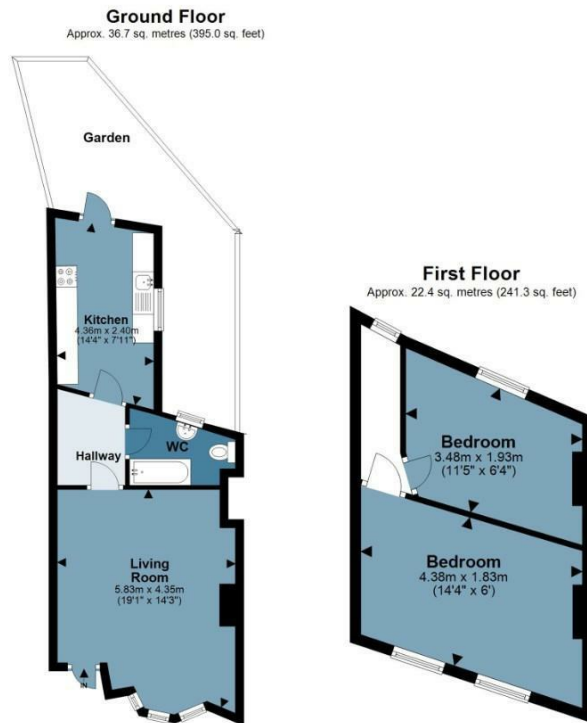




Chestnut Avenue

Approx. Gross Internal Area 59.1 Sq M (636.3 Sq Ft)

BUTLER & STAG



Measurements are approximate and for illustration purposes only. While we do not doubt the accuracy and completeness, we advise you conduct a careful independent assessment of the property to determine monetary value.
© @modephoto.uk www.modephoto.co.uk

IMPORTANT NOTICE - These particulars have been prepared in good faith and they are not intended to constitute part of an offer or contract. We have not performed a structural survey on this property and the services, appliances and specific fittings have not been tested. All photographs, measurements, floor plans and distances referred to are given as a guide and should not be relied upon.

BUTLER & STAG

☎ 020 8102 1236

🏠 508 Roman Road, Bow, London, E3 5LU

✉ bow@butlerandstag.com

www.butlerandstag.uk